

OpenBlue Cloudvue

Smart, secure and healthy workplaces

Created with simple cloud video
surveillance, access control and
intelligent security solutions





Security as a Service.
Cloud video surveillance.
Cloud access control.

Discover what OpenBlue Cloudvue can do for you

We have been the leaders in cloud video surveillance since 1999 and we have been continuously innovating and pushing the boundaries of cloud technology ever since we started. This makes us the leading experts in cloud video surveillance and gives Cloudvue a proven track record for reliability.

Today, thousands of businesses and organizations trust Cloudvue to simplify surveillance, streamline access control, and provide powerful intelligence that improves security operations and helps with organizational efficiency.

Learn more about Cloudvue’s 20 years of cloud video surveillance and security technology innovation at www.Cloudvue.io today.

Security as a Service

Intelligent cloud technologies and elegant security solutions now delivered as a service

Cloudvue makes video surveillance and access control affordable. Access cameras, gateway devices and door readers across an entire operation with centrally managed software and secure cloud-connected hardware.

- **SaaS benefits:** Software is automatically updated. New intelligence, upgrades and features are included in software subscriptions with no extra costs.
- **Flexible purchasing:** Organizations can choose to purchase new hardware upfront or through subscription options.

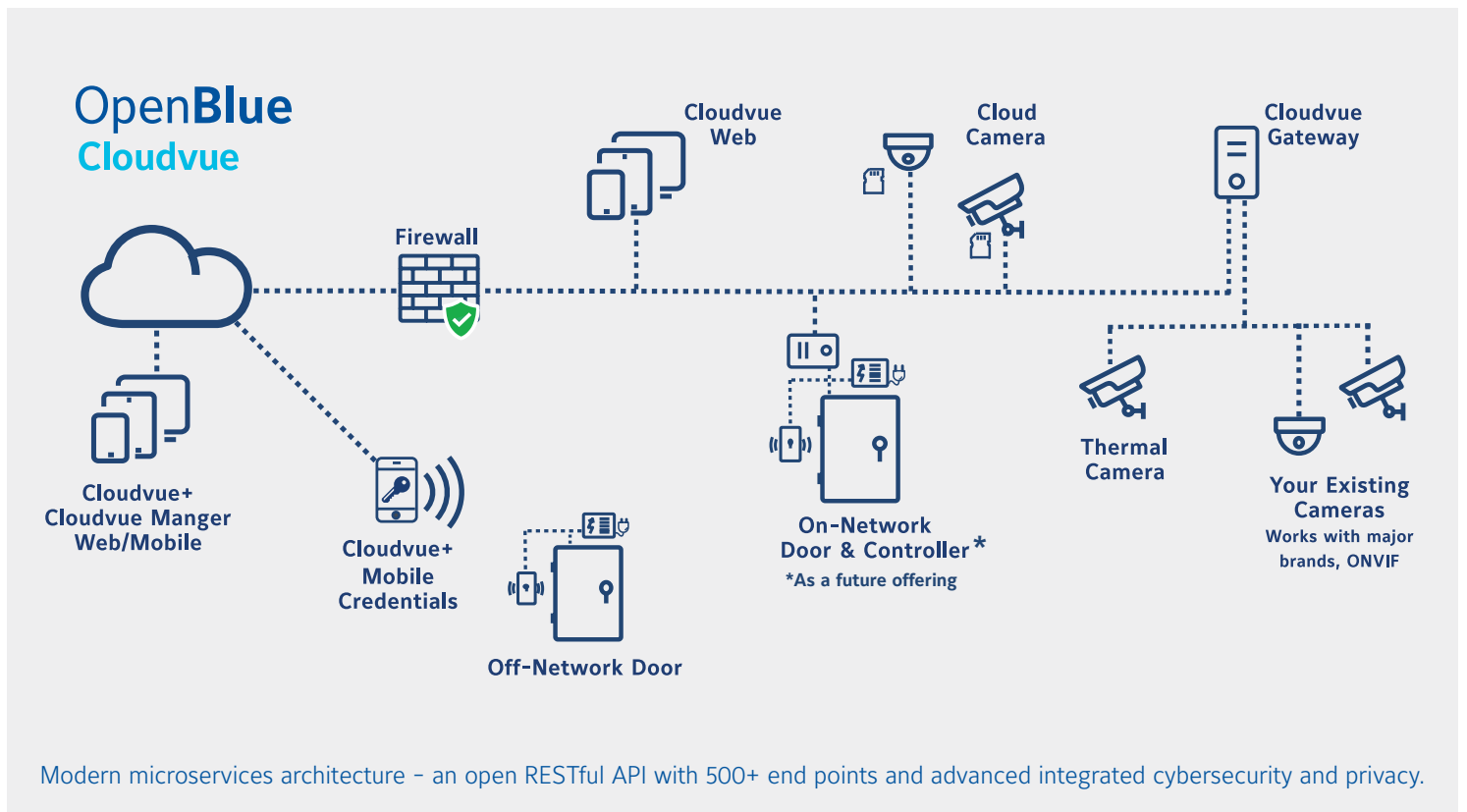
“Security as a Service sets us apart. We are not just selling something once, and we don’t sell hardware that locks you into our solutions, making it too expensive to leave. We offer a true relationship that we have to earn every day. Our amazing support, customer service and continuous innovation is how we provide value to our clients and it’s why they choose to work with us year after year.”

Martin Renkis, VP, Innovation and OpenBlue Security at Johnson Controls, and Cloudvue Founder

Cloudvue architecture

Today's physical security solutions live in the cloud and they bring all the benefits associated with any digital transformation solution now delivered as a service

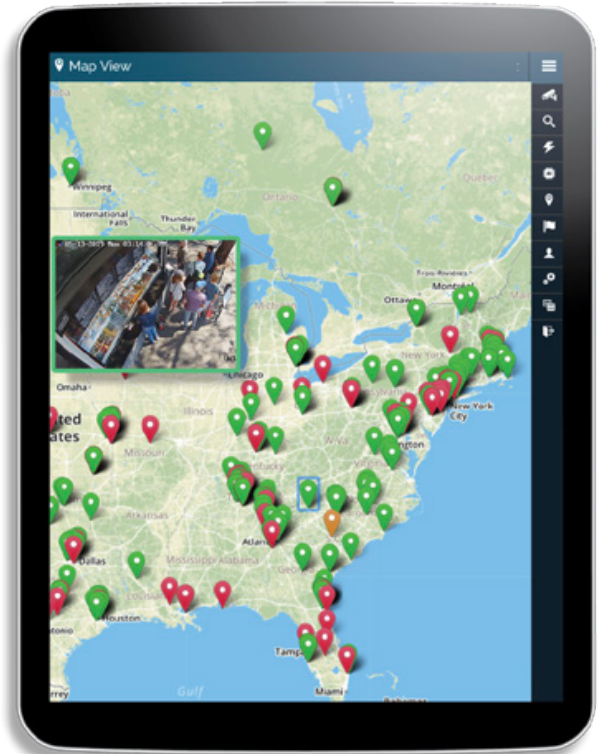
- **Centralized management:** Control cameras, doors, alerts and permissions across all your buildings from one browser or mobile device, wherever you are in the world.
- **Faster intelligence:** With the cloud, sharing information has never been faster. This increase in speed and accessibility transforms video surveillance footage from forensic data into actionable information that can be quickly distributed across entire organizations.
- **Scalable operations:** An unlimited number of cameras and access control points can be added to a single instance. Custom floor plan views, map views and powerful dashboards help keep data organized for one or thousands of locations.
- **Streamlined costs:** Organizations typically see a 20 to 30 percent reduction in the total cost of security by moving expensive on-premises security infrastructure to the cloud.



Video surveillance

Leveraging the cloud to eliminate costs and simplify surveillance

- **Use your existing cameras:** Cloudvue can connect to your existing cameras and works with major brands like ONVIF, profile S
- **Add new cloud cameras:** Choose from a variety of cloud cameras up to 8MP and PTZ with built-in storage and smarts - no need to purchase NVRs, backup servers or bridges. Every camera includes integrated intelligence and supports recording in the camera, in the cloud or both.
- **No network, no problem:** Cellular solutions plug into a standard power outlet and connect two cameras directly to the cloud using 3G, 4G and 5G networks. These are commonly used for gates, parking lots, remote properties, construction sites and other areas without typical network access.
- **Video storage your way:** Store data locally using cloud cameras or choose from a variety of cloud gateways to meet any storage challenge. Cloud storage is available with 4K resolution for up to five years. Hybrid storage options are also available.



Centralized surveillance management for your entire organization

Easy-to-use live video

Connect existing cameras with cloud gateways



Powerful technology makes searching and sharing video faster

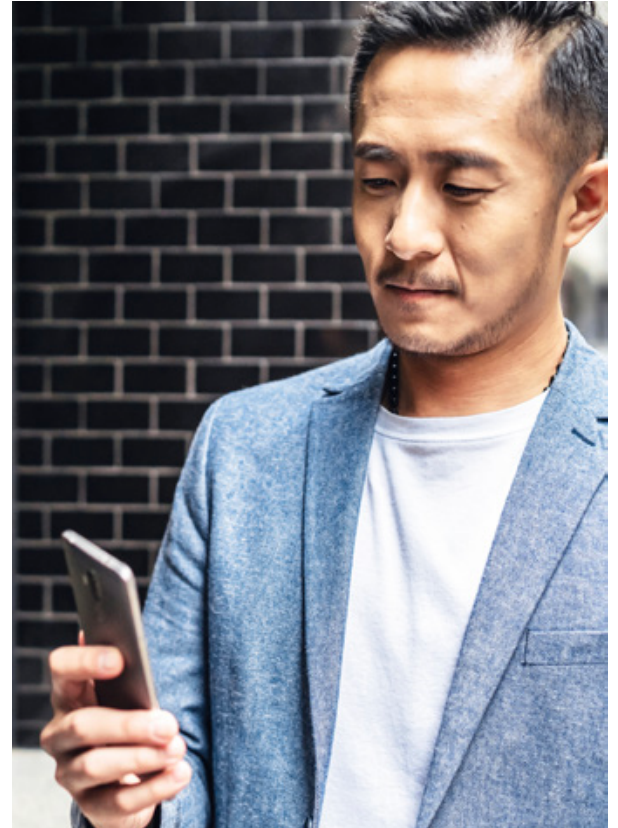
Connect cloud cameras to the cloud in seconds

Access control

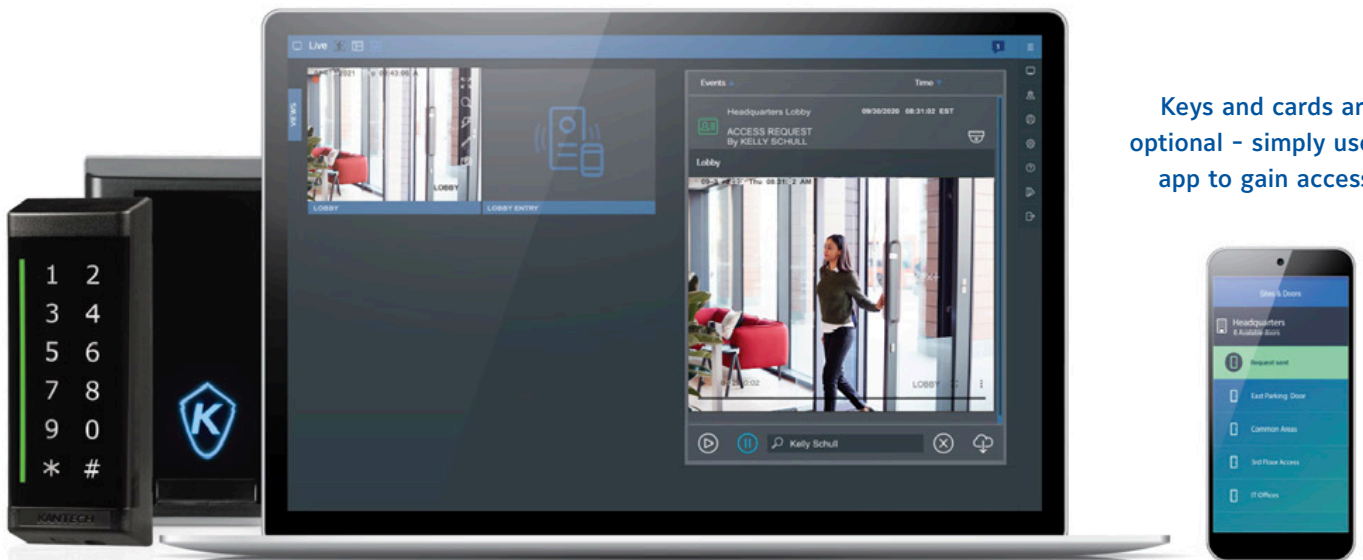
Control access to doors, gates, or anything with a lock - across an entire organization

Cloudvue works with or without controllers and makes central management of access control more affordable, more secure, and available in locations where it was once impossible.

- **More affordable:** Cloudvue moves expensive hardware and door controllers to the cloud, so even a small business with just a couple of doors can afford remote access control.
- **More secure:** Remove the security risk of lost or stolen key cards, fobs and physical keys. Securely grant and revoke access, set schedules to assign when and where people can unlock doors, and keep a searchable record that details when people access your buildings and properties.
- **More scalable:** Cloudvue access control can work in places without traditional network access, such as remote gates, trailers, worksites or substations. By leveraging the cloud, bluetooth and mobile technology, people can simply use a mobile app to unlock doors.
- **More options:** Leverage existing investments and upgrade overtime. Cloudvue supports legacy keycards and fobs and offers on-network access control solutions.



Permissions are centrally managed.



Keys and cards are optional - simply use an app to gain access.

With video surveillance and access control managed together, Cloudvue keeps a linked record of the credentials used to unlock a door along with the surveillance footage of when it happened.

Smarter workspaces

Focus on moments that matter the most with smarter technology

The processing power of the cloud increases accessibility to an array of intelligent, industry-focused tools designed to help organizations improve security operations and drive operational efficiency beyond physical security.

- **Smarter security:** Watch over more in less time by leveraging powerful analytics with alerts and custom views. Run motion analytics and heat map reports to see how people move through your buildings. Receive alerts when objects are removed or left behind. Leverage intelligent tools that know the difference between someone walking by or suspiciously lingering around – and much more.
- **Healthier operations:** The benefits of smarter technology extend beyond security. Keeping watch over business operations and being able to remotely grant access can increase operational efficiency. Tools, such as skin temperature alerts, can help provide healthier work environments for employees, clients and customers.



Crowd Formation

Object Left Behind

People Detection

Linger Detection

Vehicle Detection

Object Removed

Intelligence included

Cloudvue includes an array of intelligent analytics, including heat maps, object detection, abandoned or removed object, direction of travel, linger detection, enter and exit, crowd formation, people detection, vehicle detection, queue management and more.

Heat Maps
Learn how people move through your buildings.

What people are saying

"In terms of cost effectiveness, ease of use, and reliability on our low-bandwidth networks, OpenBlue Cloudvue's surveillance solutions are above and beyond anything else on the market. The system is intuitive, easy to navigate, and allows us quickly log in and manage HD surveillance from all our commercial properties on one screen. I would recommend OpenBlue Cloudvue to anyone who needs surveillance for multiple, large-scale commercial properties."

Duane Dietz, Metro Freightliner

"OpenBlue Cloudvue helps reduce shrink and theft in our chain of retail stores. Most recently, we were able to recover thousands of dollars in stolen inventory and convict another criminal. OpenBlue Cloudvue is an important part of our loss prevention efforts."

Steve Avery, Ace Hardware

"We reviewed several cloud-based video surveillance manufacturers - but we chose OpenBlue Cloudvue. We feel like our campuses, students and faculty are better protected with the OpenBlue Cloudvue solution."

Dianne Anderson, PhD, McKenzie Special School District





johnsoncontrols.com

About OpenBlue

OpenBlue is a complete suite of connected solutions that serves industries from workplaces to schools, hospitals to campuses, and beyond. This platform includes tailored, AI-infused service solutions such as remote diagnostics, predictive maintenance, compliance monitoring, advanced risk assessments, and more. A dynamic new space from Johnson Controls, OpenBlue is how buildings come alive.

About Johnson Controls

At Johnson Controls, we transform the environments where people live, work, learn and play. From optimizing building performance to improving safety and enhancing comfort, we drive the outcomes that matter most. We deliver our promise in industries such as healthcare, education, data centers, and manufacturing. With a global team of over 100,000 experts in more than 150 countries and over 135 years of innovation experience, we are the power behind our customers' mission. Our leading portfolio of building technology and solutions includes some of the most trusted names in the industry, such as Tyco®, YORK®, Metasys®, Ruskin®, Titus®, Frick®, PENN®, Sabroe®, Simplex® and Grinnell®.

[Follow @johnsoncontrols on twitter](#)